

# NICE

## A World Class Model

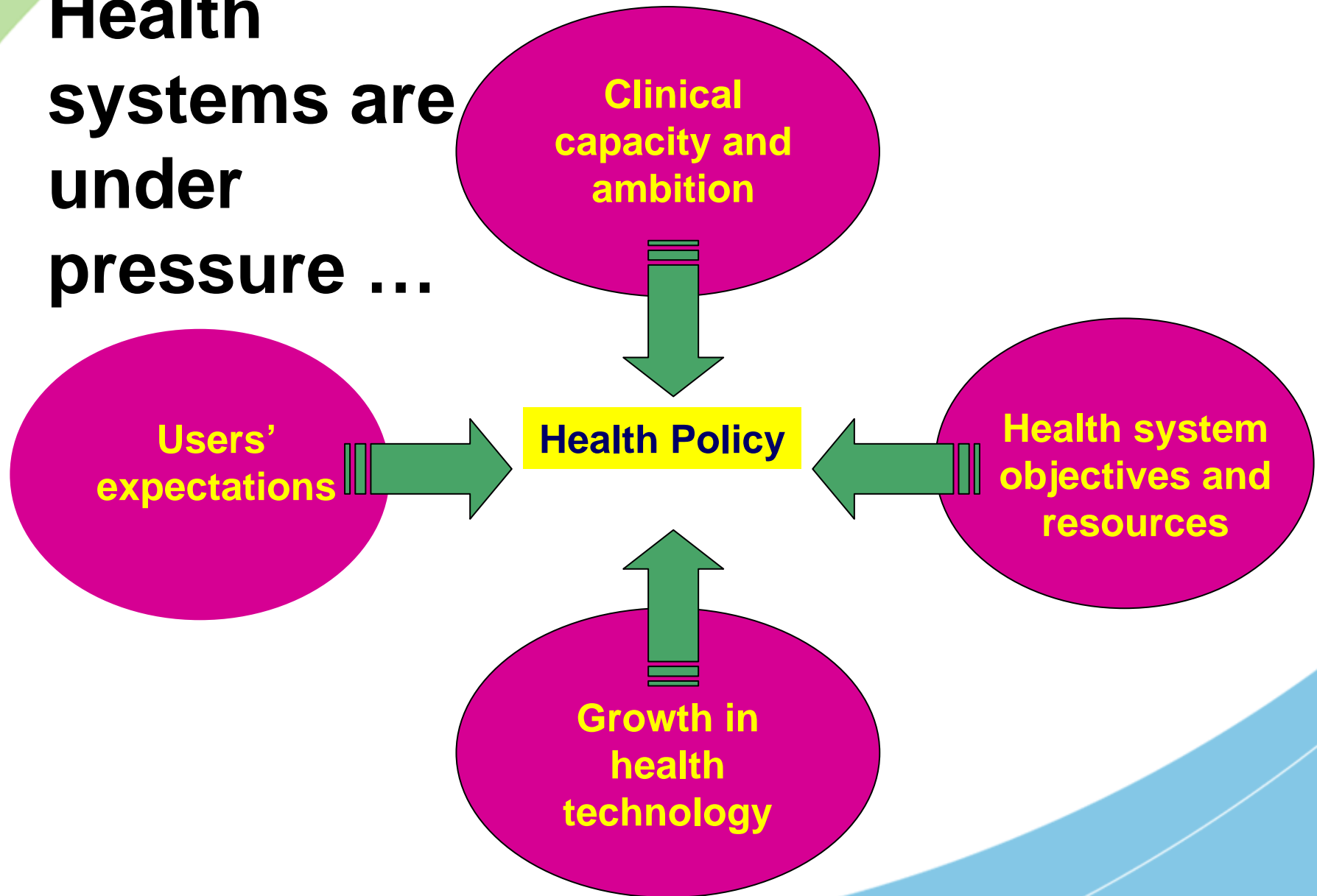
**The American Enterprise Institute**  
**28 June 2006**

Andrea Sutcliffe, Deputy Chief Executive  
National Institute for Health  
and Clinical Excellence

# Overview

- Setting the scene
- What is NICE?
- Why have NICE?
- What do we do and how?
- What are the challenges?
- What impact have we had?

**Health  
systems are  
under  
pressure ...**



# What is NICE?

*The National Institute for Health and Clinical Excellence (NICE) is the independent organisation responsible for providing national guidance on the promotion of good health and the prevention and treatment of ill health.*

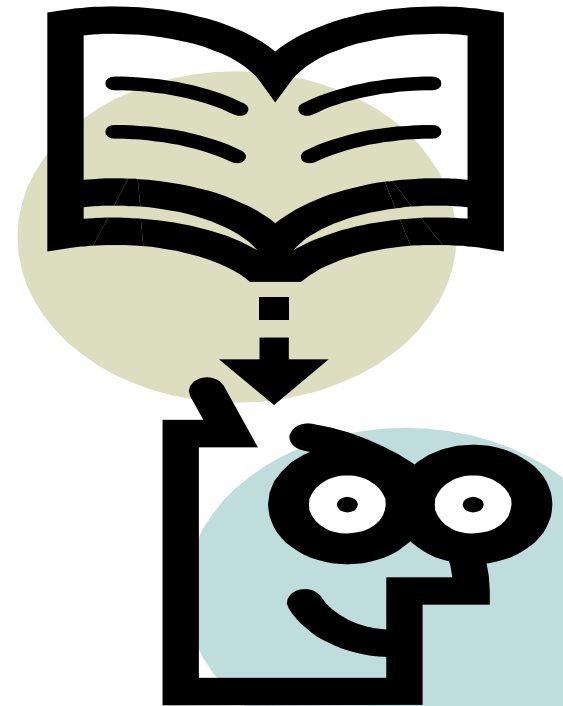


B. Smaller

*"You can't please all the people all the time, so you might  
as well please the pharmaceutical lobby."*

# Why was NICE established?

- To identify good clinical and public health practice using the best available evidence based on effectiveness, including cost effectiveness
- To help resolve uncertainty for the public, patients and professionals
- To reduce variation in the availability and quality of practice and care



# What does NICE do?

**We produce guidance in three areas of health:**

- **Public health** – guidance on the promotion of good health and the prevention of ill health for those working in the NHS, local authorities and the wider public and voluntary sector.
- **Health technologies** – guidance on the use of new and existing medicines, treatments and procedures within the NHS.
- **Clinical practice** – guidance on the appropriate treatment and care of people with specific diseases and conditions within the NHS.

# And why?

- NICE is commissioned by Department of Health for:
  - Technology appraisals
  - Clinical guidelines
  - Public health guidance
- Interventional procedures referred by clinical community
- Anyone can suggest a topic via our website
- Clinical topics are usually: NHS priorities, major diseases, controversial (or potentially so)
- Public health topics linked to policy priorities

# Key principles of NICE guidance development

- Independent advisory committees
- Comprehensive evidence base
- Expert input
- Multiple perspectives
- Transparent process & decision making
- Genuine and public consultation
- Regular review

# Status of the appraisals guidance

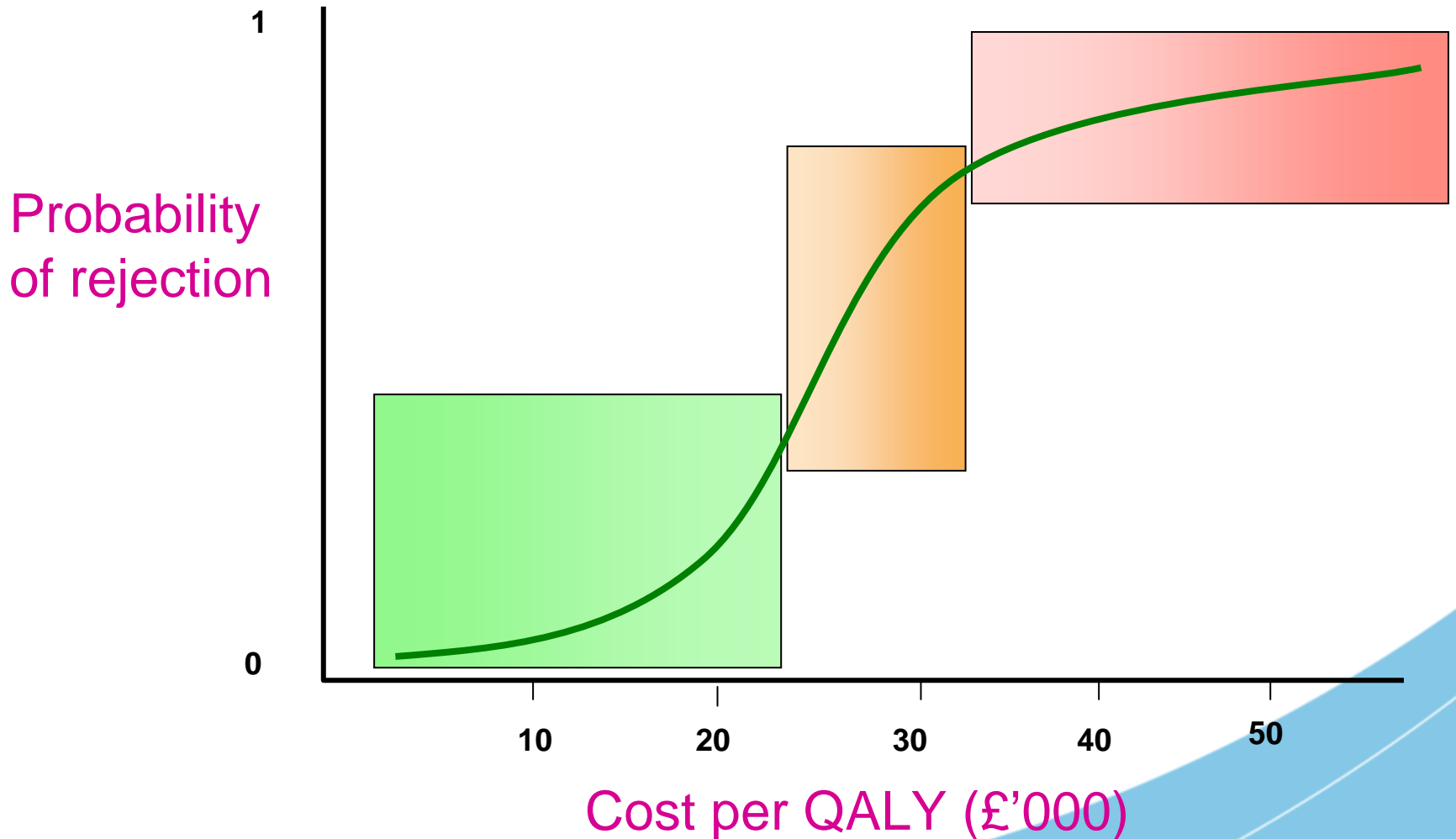
- Health professionals are expected to take NICE guidance into account when deciding what treatments to give people.
- However, NICE guidance does not replace their knowledge and skills; it is still up to health professionals to make decisions about a particular patient in consultation with the patient and/or their guardian or carer when appropriate.
- Healthcare organisations are expected to make the funding available for implementation

# Challenges

- Methodology
  - Evidence
  - Cost effectiveness
- Involving stakeholders
- Timeliness
- Implementation



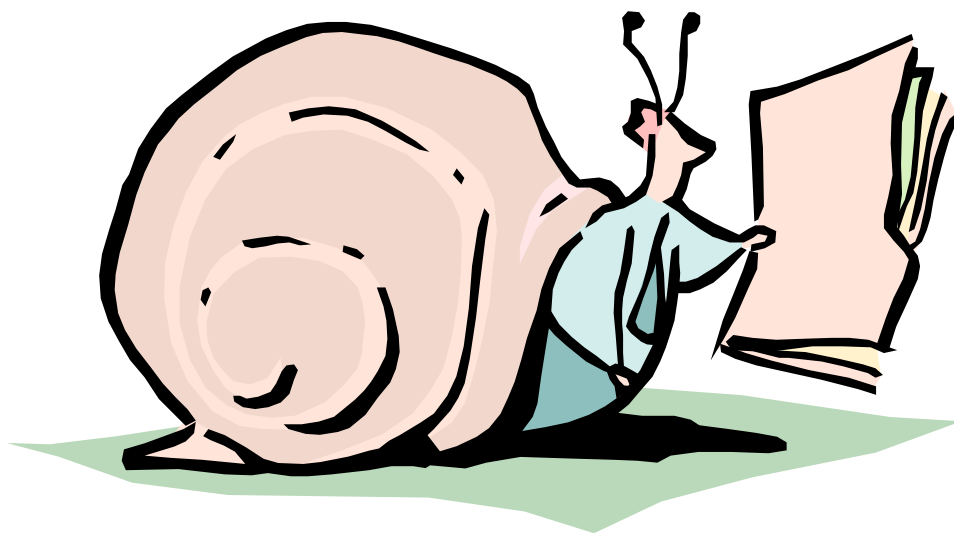
# Assessing Cost Effectiveness





Patient groups, clinicians, companies and others can have their say but not always have their way

# Timeliness



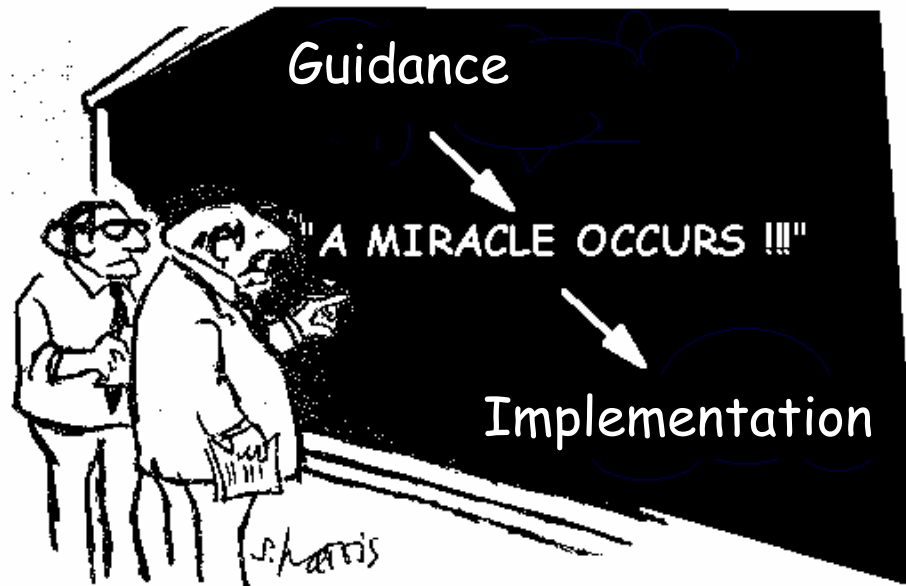
**Campaigners jubilant as lifesaving Herceptin is finally granted a licence**

**Thousands  
to get breast  
cancer drug  
on the NHS**

# Herceptin given the go-ahead

Watchdog takes first steps to  
approving new breast-cancer drugs

# Implementation



I think you should be more explicit here in step two."

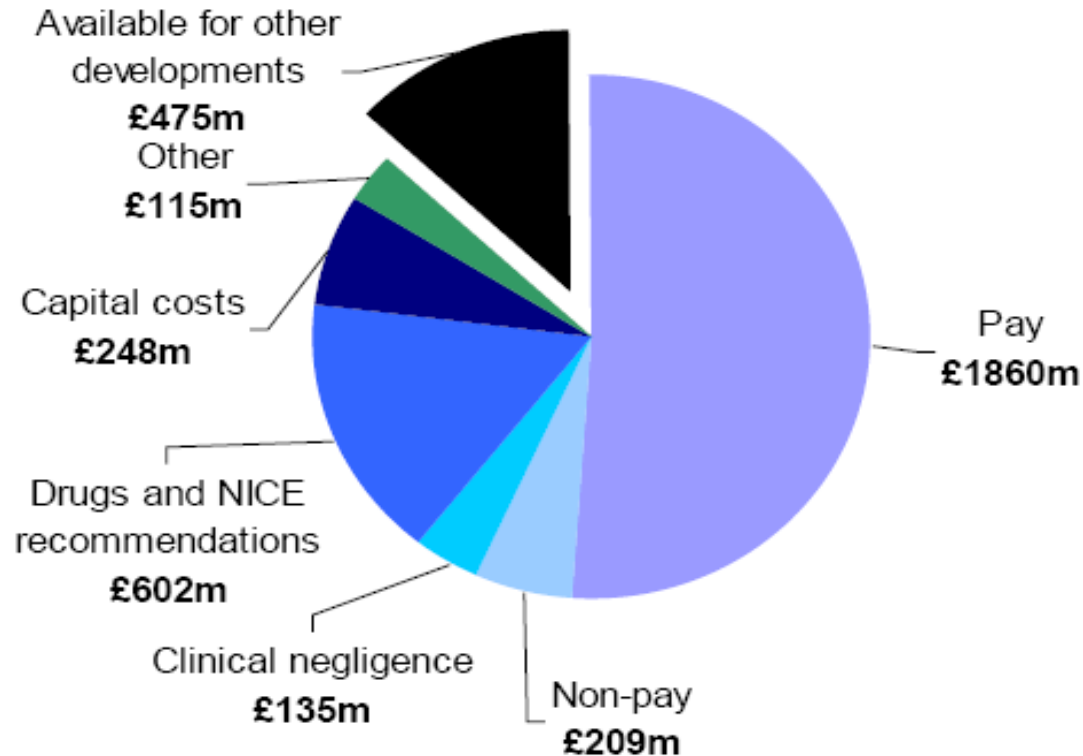
# Impact on the system

To April 2006	Routine use	Selective use	Research use only
Pharmaceutical	21	46	2
Device	5	10	2
Diagnostic	1	1	1
Procedure		8	3
Health promotion	1		
<b>Totals</b>	<b>28</b>	<b>65</b>	<b>8</b>

Our estimate of total annual cost to the NHS of technology appraisal guidance if implemented fully = £1,006.2 million

# Cost of NICE recommendations: 2005/06

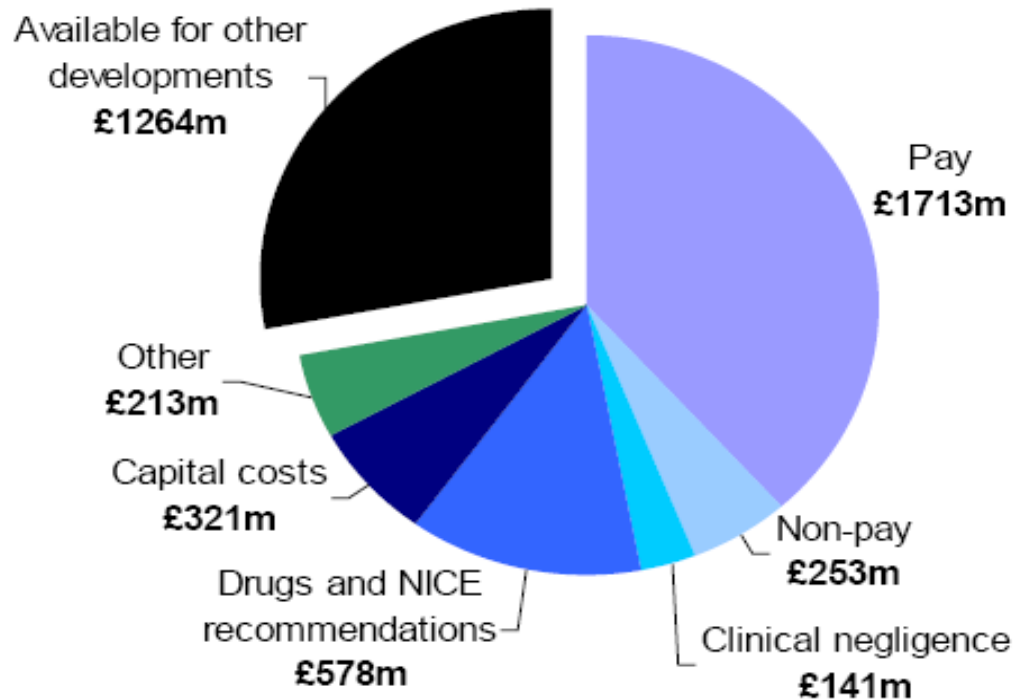
*Of the £3.6 billion cash increase in 2005/06 for hospital and community health services in England, drugs and NICE recommendations accounted for 17% of the total (£602m)<sup>1</sup>*



<sup>1</sup> "Where's the money going?", King's Fund, London 2006

## Cost of NICE recommendations: 2006/07

*Of the £4.5 billion cash increase in 2006/07 for hospital and community health services in England, it is estimated that drugs and NICE recommendations will account for 13% of the total (£578m)<sup>1</sup>*



<sup>1</sup> "Where's the money going?", King's Fund, London 2006

# Visit [www.nice.org.uk](http://www.nice.org.uk)

Microsoft Internet Explorer provided by NICE

Address: <http://www.nice.org.uk/>

Navigation: Home | Our guidance | Using guidance | Get involved | News & Events | About NICE

Search:  Go

Vision Impaired | Login | Links | Glossary | Contact | Site map | Site help

**NHS**  
National Institute for  
Health and Clinical Excellence

Providing national guidance on promoting good health and preventing and treating ill health

**Welcome to the National Institute for Health and Clinical Excellence**

NICE is an independent organisation responsible for providing national guidance on promoting good health and preventing and treating ill health.

[Read more about NICE](#)

**Using guidance**

NICE helps health professionals implement our guidance by providing tools such as cost templates, audit criteria and slide sets.

- Benefits of implementation
- NICE implementation programme
- Implementation tools
- Tracking guidance implementation
- Help implement NICE guidance

**Get involved**

**Latest guidance**

- Smoking cessation
- Physical activity
- Attention deficit hyperactivity disorder (ADHD)
- Sarcoma
- Tuberculosis

[See all latest guidance](#)

**Latest news**

- NICE launches first public health guidance: focus on smoking cessation and physical activity (30 Mar 2006)
- NICE issues guidance on drug treatments for attention deficit hyperactivity disorder (ADHD) (23 Mar 2006)
- New NICE guidelines launched for World TB Day to tackle tuberculosis (22 Mar 2006)
- NICE issues guidance on laser eye surgery for

**Search NICE guidance**

Want to know what NICE recommends?

Search

[Advanced guidance search](#)

**Subscribe**

Subscribe to our alerts & e-newsletter

[Change your preferences](#)

**RSS**

[Subscribe to our RSS feed](#)

Taskbar: Start | PhoneManager | Presentation - Au... | Welcome to NICE... | Bipolar disorder - ... | Welcome to th... | Inbox - Microsoft... | 15:37